



470 CLASS JUNIOR WORLD CHAMPIONSHIP 2012

26th January to 3rd February 2012

Takapuna Beach, North Shore, Auckland, New Zealand.

The Organising Authority is the Takapuna Boating Club, and in co-operation with the International 470 Class Association and the New Zealand 470 Class Association, invite 470 sailors to take part in the

**Junior 470 World Championship for men and mixed crews
and the
Junior Women's 470 World Championship.**

SAILING INSTRUCTIONS

1.0 RULES

- 1.1 The regatta will be governed by the rules as defined in *The Racing Rules of Sailing*.
- 1.2 No prescriptions of Yachting New Zealand will apply except as defined in Notice of Race 1.2.
- 1.3 For medal races, ISAF addendum Q, Umpired Fleet racing, will apply and take precedence over any conflicting instructions.
- 1.4 If there is a conflict between languages the English text will take precedence.
- 1.5 The Equipment Rules of Sailing will apply.

2.0 CAMERAS and ELECTRONIC EQUIPMENT

Boats may be required to carry cameras, sound equipment or positioning equipment as specified by the organizing authority.

3.0 NOTICES TO COMPETITORS

Notices to competitors will be posted on the official notice board located inside the main deck of the Takapuna Boating Club.

4.0 CHANGES TO SAILING INSTRUCTIONS

Any changes to the sailing instructions will be posted before 0900hrs on the day it will take effect, except that any change to the schedule of races will be posted by 1800hrs, or at the end of protest time, whichever is earlier on the day before it will take effect. Further rescheduling may take place during the day.

5.0 SIGNALS MADE ASHORE

- 5.1 Signals made ashore will be displayed on the flagpole located on the balcony of the Takapuna Boating Club.



- 5.2** When flag AP is displayed ashore, ‘1 minute’ is replaced with ‘not less than 30 minutes’ in Race Rule AP.
- 5.3** Flag D with one sound means “The warning signal will be made not less than 30 minutes after flag D is displayed, (Boats are requested not to leave the beach until this signal is made”).

6.0 FORMAT

- 6.1** The event will be competed in a single series with 13 races including the Medal Race.
- 6.2** There will be a Medal Race for both the men - mixed crew and the women.

7.0 SCHEDULE of RACES

7.1

Day 1	26 th January	Registration and Equipment Inspections	0900 -1800
Day 2	27 th January	Registration and Equipment Inspections Practice Race Opening Ceremony	0900 -1800 1500 1900
Day 3	28 th January	2 races	1100
Day 4	29 th January	2 races	TBA
Day 5	30 th January	2 races	TBA
Day 6	31 st January	2 races	TBA
Day7	1 st February	2 races	TBA
Day 8	2 nd February	2 races	TBA
Day 9	3 rd February	Medal and last race - 1 race Closing Ceremony	TBA 1700

- 7.2** A maximum of three races per day may be sailed.
- 7.3** To alert boats that a race or sequence of races will begin soon, an orange flag will be displayed with one sound at least five minutes before a warning signal is displayed.
- 7.4** On Friday 3rd February 2012 no warning signal will be made after 1500hrs.

8.0 CLASS FLAGS

- 8.1** Class flags for a single series will be a white flag with a red 470 insignia.
- 8.3** Class flags for the men’s / mixed fleet Medal Race will be as per SI 8.1.
- 8.4** Class flag for the women’s fleet will be a white flag with a red 470 insignia and a red diamond.

9.0 RACING AREA

Attachment 2 shows the location of the racing area.

10.0 COURSES

- 10.1** The diagrams in Attachment 1 show the courses, including the approximate angles between legs, the order in which marks are to be passed, and the side on which each mark is to be left.



10.2 No later than the warning signal, the race committee signal boat will display the course to be sailed, the approximate compass bearing and the distance to the first mark.

10.3 Courses will not be shortened. This changes rule 32.

11.0 MARKS

11.1 Refer to **Attachment 1**

11.2 New marks, as provided in Instruction 11.1, will be Yellow Cylindrical buoys.

12.0 THE START

12.1 The starting line will be between a staff displaying an orange flag on signal boat at the starboard end of the line and an orange flag on the port end starting mark.

12.2 Boats whose warning signal has not been made shall avoid the starting area during the starting sequence for other races. The starting area is defined as a rectangle 50metres from the starting line in all directions.

12.3 A boat starting later than four minutes after her starting signal will be scored Did Not Start without a hearing. This changes rule 4A and A5.

13.0 CHANGE OF THE POSITION OF THE NEXT MARK

13.1 To change the next leg of the course, the race committee will lay a new mark (or move the finishing line) and remove the original mark as soon as practicable. When in a subsequent change a new mark is replaced, it will be replaced by the original mark.

13.2 Except at a gate, boats shall pass between the race committee boat signaling the change of course of the next leg and the nearby mark, leaving the mark to port and the race committee boat to starboard. This changes rule 28.1.

14.0 THE FINISH

The finishing line will be between a staff displaying an orange flag on the finishing mark at the starboard end of the line and the port end finishing mark at the other end.

15.0 PENALTY SYSTEM

15.1 Appendix P, Special Procedures for rule 42, will apply

15.2 A boat that has taken a penalty or retired under rule 44.1 shall complete an acknowledgement form at the race office within the protest time limit.

16.0 TIME LIMITS

16.1 Time Limits are as follows:

	Time Limit	Mark 1 time limit	Finish Window	Race Target Time
Fleet race	90 minutes	30 minutes	20 minutes	60 minutes
Medal race	50 minutes	20 minutes	10 minutes	30 minutes

16.2 If no boat has passed Mark 1 within the Mark 1 time limit the race will be abandoned.



- 16.3** Boats failing to finish within the time limit stated in the Finish Window after the first boat sails the course and finishes will be scored Did Not finish. This changes RRS 35, A4 and A5.
- 16.4** Failure to meet the target time will not be grounds for redress. This changes rule 62.1(a).
- 17.0 PROTESTS AND REQUEST FOR REDRESS**
- 17.1** Protest forms are available at the race office located in the Takapuna Boating Club. Protest and requests for redress or reopening shall be delivered there with the appropriate time limit.
- 17.2** The protest time limit is 60 minutes after the last boat has finished the last race of the day. The same protest time limit applies to all protests by the race committee and jury and to requests for redress. This changes rules 61.3 and 62.2.
- 17.3** Notices will be posted no later than 15 minutes after the protest time limit to inform competitors of hearings in which they are parties or named as witnesses. Hearings will be held in the protest room, located in the Takapuna Boating Club.
- 17.4** Notices of protests by the race committee or protest committee will be posted to inform boats under rule 61.1(b).
- 17.5** A list of boats that, under instruction 16.1, have been penalized for breaking rule 42 or have been disqualified by the jury will be posted on the official notice board.
- 17.6** For the purpose of rule 64.3(b) the “authority responsible” is the 470 Technical Delegate.
- 17.7** Breaches of instructions 2, 3, 13.2, 16.2, 20, 22, 24, 25 and 26 will not be grounds for a protest by a boat. This changes rule 60.1(a). Penalties for these breaches are at the discretion of the protest committee.
- 17.8** On the last day of the regatta a request for reopening of a hearing other than the Medal Race hearing shall be delivered:
- (a)** within the protest time limit if the requesting party was informed of the decision on the previous day.
 - (b)** no later than 30 minutes after the requesting party was informed of the decision on that day. This changes rule 66.
- 17.9** On the last day of racing, a request for redress based on the jury decision shall be delivered no later than 30 minutes after the decision was posted. This changes rule 62.2.
- 17.10** Decisions of the jury will be final as provided in rule 70.5.
- 18.0 SCORING**
- 18.1** To request a correction of an alleged error in posted race or series results, a boat may complete a scoring enquiry form available at the race office.
- 18.2** There will be 13 final races including the Medal Race in the single series.



- 18.3** At least six final races are required to be completed to constitute the regatta series or to enter the Medal Race.
- 18.4 Discards:**
- 18.4.1** When fewer than four races have been completed, a boat's series score will be the total of her race scores,
- 18.4.2** When four or more races have been completed, a boat's series score will be the total of her race scores excluding her worst score. However, the score of the Medal race will not be excluded.
- 18.5 Medal Race:**
- 18.5.1** The boats assigned to compete in the medal race will be ranked highest in the regatta except for a boat disqualified from the medal race under RRS 5 or 69.
- 18.5.2** RRS A4.1 is changed so that the points are doubled, and RRS A4.2 is changed so that the scores are based on the number of boats assigned to compete in that race.
- 18.5.3** For boats assigned to compete in the Medal race, ties in the regatta score are broken by the Medal race score. This changes RRS A8. For boats with the same points score in the Medal race, ties in the regatta score are broken applying RRS A8 to the opening series score.
- 18.5.4** A boat assigned to compete in the Medal race shall make a genuine effort to start, sail the course and finish. The penalty for a breach of this instruction will be ranking the boat tenth in the regatta. If there are two such boats, they will be ranked ninth and tenth, in order of their opening series ranks, and so on. This changes RRS A2.
- 19.0 SAFETY REGULATIONS**
- 19.1** Competitors shall sign-in each time they leave the shore to enter the course area, and shall sign-off each time they come ashore from the course.
- 19.2** A boat that retires from a race or returns to the launching area before she finished the last race of the day shall notify the Race Committee as soon as possible.
- 19.3** The sign-on, sign-off station will be located at the launching ramp on Takapuna Beach.
- 19.4** The penalty for failure to comply with this instruction will be five points to be added to the first race of the day. This changes Rule A5.
- 20.0 REPLACEMENT OF CREW OR EQUIPMENT**
- 20.1** Substitution of competitors will not be allowed without prior written approval of the Race Committee and shall comply with all the restrictions in the Notice of Race.
- 20.2** Substitution of damaged or lost equipment will not be allowed unless approved by the Race Committee. Requests for substitution shall be made to the race Committee at the first reasonable opportunity.



21.0 EQUIPMENT AND MEASUREMENT CHECKS

A boat or equipment may be inspected at any time for compliance with the class rules and sailing instructions. On the water, a boat can be instructed by a race committee measurer to proceed immediately to a designated area for inspection

22.0 ADVERTISING

Boats shall display advertising supplied by the organizing authority.

22.0 OFFICAL BOATS

Official boats will be marked as follows:

Official Boat	Flag
Race Committee	TBC Flag
Jury	Flag "J"
Press / Media	Flag "Media"
Safety Boat	Red "Rescue" flag

24.0 SUPPORT BOATS

24.1 Except when requested to participate in a rescue operations, team leaders, coaches, parents and other support personnel shall stay outside areas where boats are racing and are restricted to a 5 knot speed limit, from the time of the preparatory signal for the first start of a sequence of starts until all boats have finished or the Race Committee signals a postponement or abandonment of all races. The areas the boats are racing in is defined as the area inside the course and within 100 metres of any mark, lay line, starting line, finishing line or any area where any boat that is racing is sailing or may sail.

24.2 When the wind is less than 10 knots support boats shall not exceed 5 knots within 500m of the area where boats are racing.

24.3 When flag W (with a long sound signal) is displayed on a committee boat all support boats are requested to remain afloat and assist all sailors.

24.4 Supports boats shall be marked with a flag with their three national letters clearly displayed or shall be permanently marked with a sticker of their three national letters on each side of the boat.

24.5 Sufficient Personal Flotation Devices for each crew member must be carried by all support boats at all times in accordance with New Zealand Maritime Law.

24.6 Coaches, team leaders and other support personnel shall comply with clause 26 at all times.

25.0 PROHIBITED ANCHORING AREA

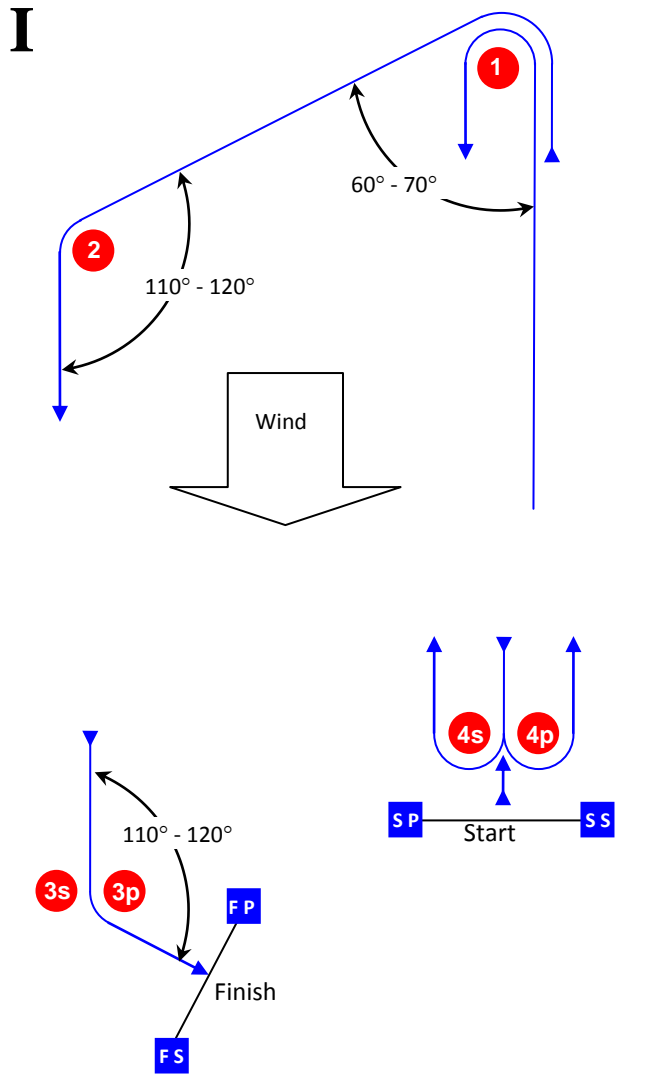


- 25.1** Boats associated with the regatta and registered support boats shall comply with the New Zealand Government Regulation “Submarine Cables and Pipelines Protection Act 1996”. The regulation prohibits anchoring in the area shaded in the ‘No Anchoring Area’ in Attachment 3 and defined on charts NZ 532 and NZ 5322.
- 25.2** Any boat or support boat breaking NoR clause 15 will be subject to a hearing which may result in a report to their National Authority and ISAF. As a consequence, a competitor associated with the coach of the support craft may be disqualified from the race closest to the time of the infringement.
- 26.0 TRASH DISPOSAL**
Boats shall not put trash in the water. Trash may be placed aboard support and race committee boats.
- 27.0 LAUNCHING AND RETRIEVING**
All boats must be launched and retrieved from Takapuna Beach.
- 28.0 RADIO COMMUNICATION**
Except in an emergency, a boat shall neither make radio transmissions while racing nor receive radio communications not available to all boats. This restriction applies to mobile phones.
- 29.0 PRIZES**
The first crew of the final official ranking list of each Championship will be declared:
“470 Class Junior World Champion” or
“470 Class Junior Women’s World Champion”
Medals will be awarded to the first, second and third crews of each Championship by the International 470 Class Association.
- 30.0 DISCLAIMER OF LIABILITY**
Competitors participate in the regatta entirely at their own risk. See racing Rule 4, *Decision to Race*. The Organising Authority and all parties involved in the regatta organisation will not accept and liability for material damage or personal injury or death sustained in conjunction with prior to, during, or after the regatta.
- 31.0 MEDIA RIGHTS**
31.1 By participating in the regatta competitors automatically grant the organising authority , 470 Internationale, ISAF and the sponsors of the championship, the right in perpetuity to make, use and show, from time to time at their discretion, any motion pictures and live, taped or filmed television and other reproductions of the athlete during the period of the competition without compensation.
- 32.0 INSURANCE**
Each participating boat shall be insured with a valid third party liability insurance with a minimum cover of 1.000.000 Euro per event or equivalent.
A certificate of such insurance shall be shown during registration.



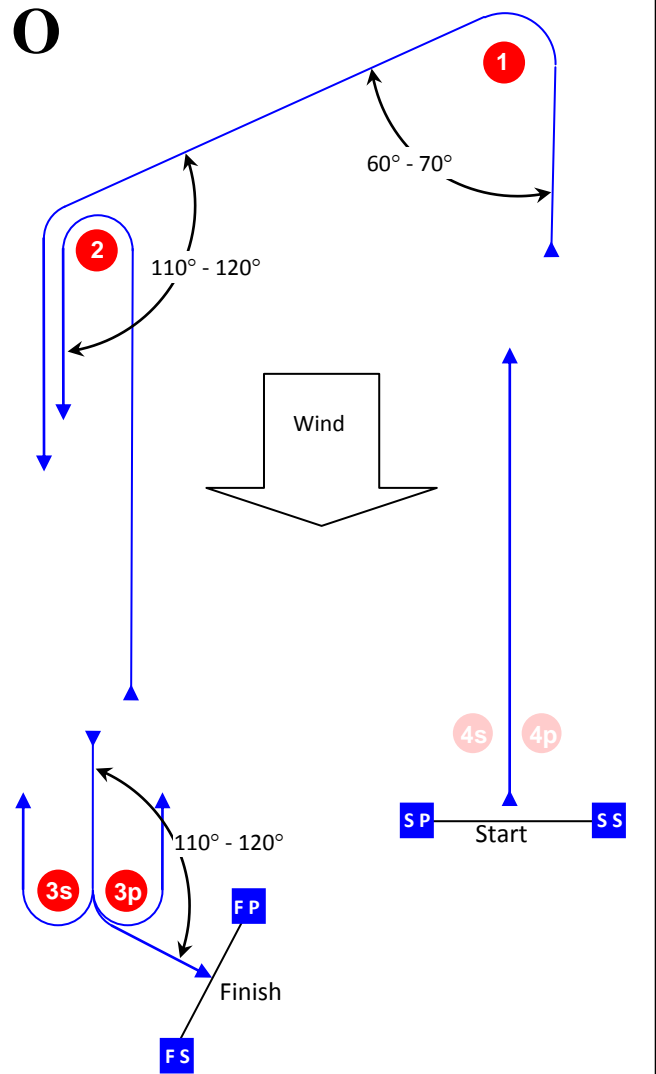
ATTACHMENT 1 COURSES

Course Illustration – Trapezoid



Course: Inner Trapezoid

Signal	Mark Rounding Order
I2	Start – 1 – 4s/4p – 1 – 2 – 3p – Finish
I3	Start – 1 – 4s/4p – 1 – 4s/4p – 1 – 2 – 3p – Finish
I4	Start – 1 – 4s/4p – 1 – 4s/4p – 1 – 4s/4p – 1 – 2 – 3p – Finish



Course: Outer Trapezoid

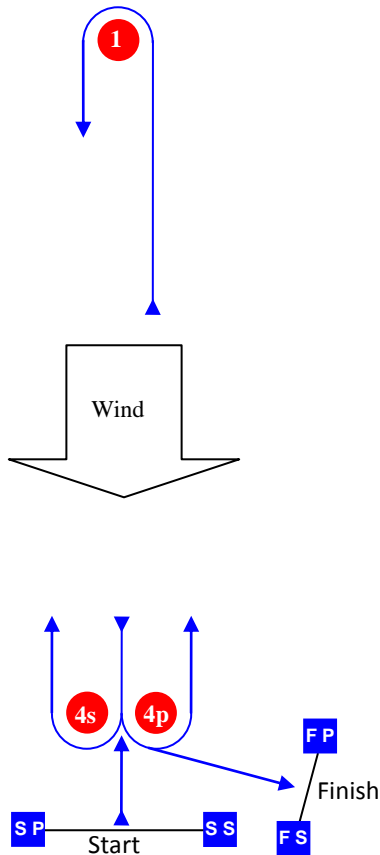
Signal	Mark Rounding Order
O2	Start – 1 – 2 – 3s/3p – 2 – 3p – Finish
O3	Start – 1 – 2 – 3s/3p – 2 – 3s/3p – 2 – 3p – Finish
O4	Start – 1 – 2 – 3s/3p – 2 – 3s/3p – 2 – 3s/3p – 2 – 3p – Finish

Mark	Description
1 2	Large Orange Cylindrical Buoys
3s 3p	Orange Cylindrical Buoys
4s 4p	Orange Cylindrical Buoys
SS Starting mark starboard end	Committee Boat
SP Starting mark port end	Committee Boat
FS Finishing mark starboard end	Committee Boat
FP Finishing mark port end	Committee Boat



Course Illustration – Windward Leeward with reaching finish

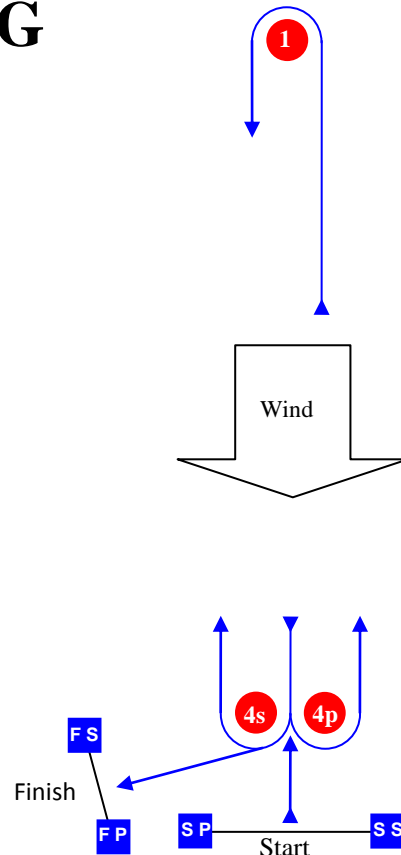
LR



Course: Leeward finish

Signal	Mark Rounding Order
LR2	Start – 1 – 4s/4p – 1 – 4p – Finish
LR3	Start – 1 – 4s/4p – 1 – 4s/4p – 1 – 4p – Finish
LR4	Start – 1 – 4s/4p – 1 – 4s/4p – 1 – 4s/4p – 1 – 4p – Finish

LG



Course: Windward Finish

Signal	Mark Rounding Order
LG2	Start – 1 – 4s/4p – 1 – 4s – Finish
LG3	Start – 1 – 4s/4p – 1 – 4s/4p – 1 – 4s – Finish
LG4	Start – 1 – 4s/4p – 1 – 4s/4p – 1 – 4s/4p – 1 – 4s – Finish

Mark	Description	
1	Large Orange cylindrical Buoy	
4s 4p	Orange Cylindrical Buoys	
SS	Starting mark starboard end	Committee Boat
SP	Starting mark port end	Committee Boat
	LR	LG
FS	Finishing mark starboard end	Committee Boat
FP	Finishing mark port end	Committee Boat



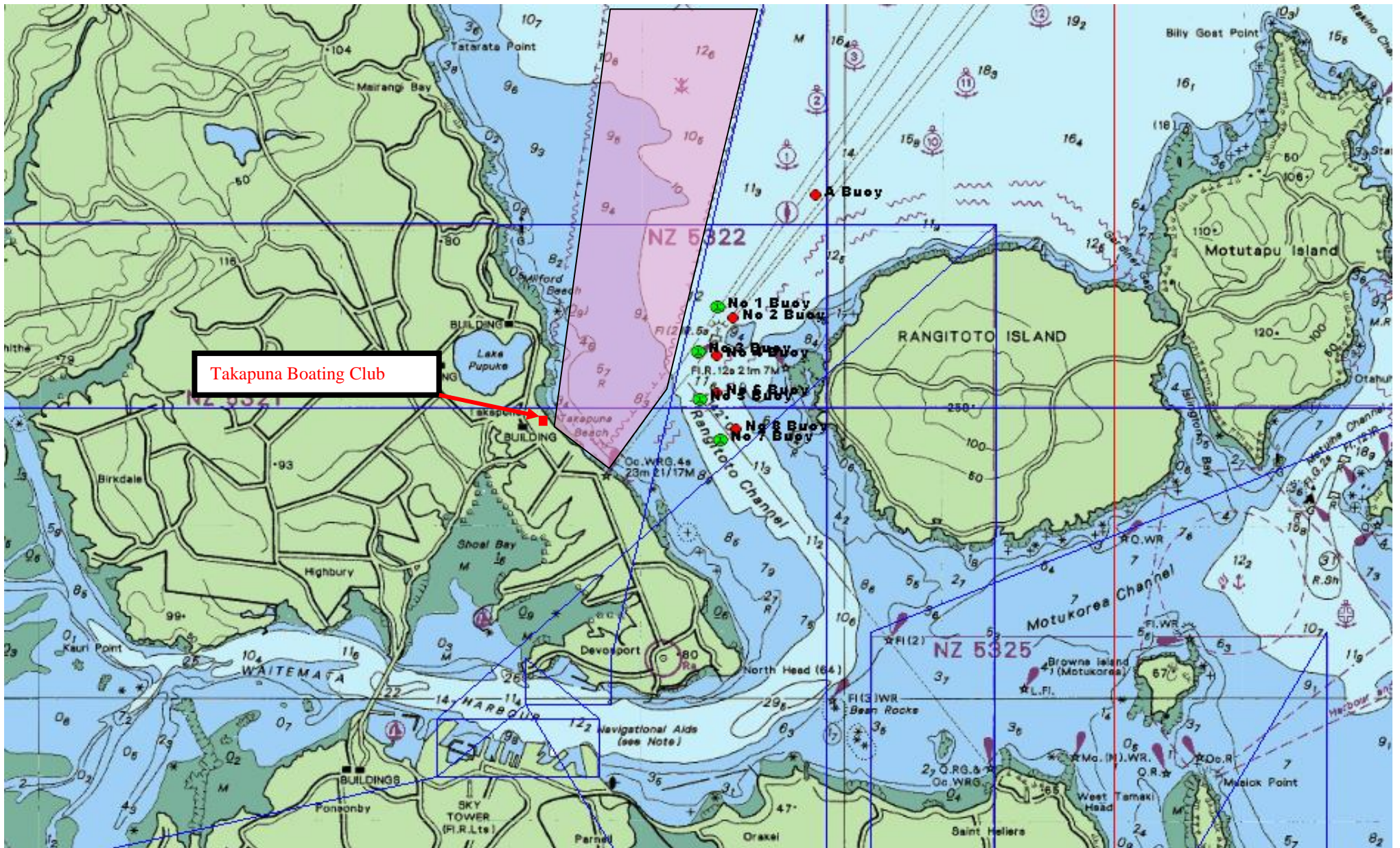
ATTACHMENT 2: SAILING AREA





ATTACHMENT 3

NO ANCHORING AREA. (Shaded in Pink)





ADDENDUM Q UMPIRED FLEET RACING

This addendum has been approved by ISAF in accordance with rule 86.2 and ISAF Regulation 28.1.3.

These sailing instructions change the definitions Finish and Proper Course, rules 20.1, 28.1, 44, 60, 61, 62, 63, 64.1, 65, 66, 70, 78.3, and B7.

Q1 CHANGES TO RACING RULES

Additional changes to rules are made in instructions Q2, Q3, Q4 and Q5.

Q1.1 Changes to the definitions and the Rule of Part 2 and Part 4

- (a) The definition Finish is changed to
A boat *finishes* when any part of her hull, crew or equipment in normal position, crosses the finishing line in the direction of the course from the last *mark*, either for the first time or after completing any penalties or, under rule 28.1, after correcting an error made at the finishing line.
- (b) Add to the definition Proper Course: 'A boat making a penalty or manoeuvring to take a penalty is not sailing a *proper course*'.
- (c) When rule 20.1 applies, the following arm signals are required in addition to the hails:
(1) for 'Room to tack', repeatedly and clearly pointing to windward; and
(2) for 'You tack', repeatedly and clearly pointing at the other boat and waving the arm to windward.
Instruction Q1.1(c) does not apply to boards.

Q1.2 Changes to Rules Involving Protests, Request for Redress, Penalties and Exoneration

- (a) The first sentence of rule 44.1 is replaced with: 'A boat may take a One-Turn Penalty when she may have broken a rule of Part 2 (except rule 14 when she has caused damage or injury) or rule 31 or 42 while *racing*'.
- (b) For boards, the One-Turn Penalty is one 360degree turn with no requirement for a tack or a gybe.
- (c) Rule 60.1 is replaced with 'A boat may protest another boat or request redress provided she complies with instructions Q2.2 and Q2.4'.
- (d) The third sentence of rule 61.1(a)(2) are deleted. Rule B7 is deleted.
- (e) Rules 62.1(a), (b) and (d) are deleted. In a race where the addendum applies, there shall be no scoring adjustments for redress given under any of these rules for a previous race.
- (f) Rule 64.1(c) is changed so that the provision for exonerating a boat may be applied by the umpires without a hearing, and it takes precedence over any conflicting instruction of this addendum.
- (g) Rules P1 to P4 shall not apply.

Q2 PROTESTS AND REQUESTS FOR REDRESS BY BOATS

Q2.1 While racing, a boat may protest another boat under a rule of Part 2, except rule 14, or under rule 31 or 42; however, a boat may only protest under a rule of part 2 for an incident in which she was involved. To do so she shall hail 'protest' and conspicuously



display a red flag at the first reasonable opportunity for each. She shall remove the flag before, or at the first reasonable opportunity after a boat involved in the incident has taken a penalty voluntarily or after an umpire's decision. However, a board need not display a red flag.

Q2.2 A boat that protests as provided in instruction in Q2.1 is not entitled to a hearing. Instead, a boat involved in the incident may acknowledge breaking a rule by promptly taking a One-turn Penalty. If the protested boat does not take a penalty voluntarily, an umpire will decide whether to penalise any boat and signal the decision as provided in instruction Q3.1

Q2.3 At the finishing line the race committee will display each boat's identification and her finishing place or scoring abbreviation. After this has been done for all boats, the race committee will promptly display flag B with one sound. Two minutes later flag B will be removed with one sound.

Q2.4 A boat intending to

- (a) protest another boat under a rule other than instruction Q3.2 or Q4.2(a), or a rule listed in instruction Q2.1,
- (b) protest another boat under rule 14 if there was contact that caused damage or injury, or
- (c) request redress

Shall hail the race committee before or during the display of flag B. The same time limit applies to protests under instructions Q5.4 and Q5.5. The protest committee may extend the time limit if there is good reason to do so.

Q2.5 The race committee will promptly inform the protest committee about any protests or requests for redress made under instruction Q2.4.

Q3 UMPIRE SIGNALS AND IMPOSED PENALTIES

Q3.1 An umpire will signal a decision as follows:

- (a) A green and white flag with one long sound means 'No penalty'.
- (b) A red flag with one long sound means 'A penalty is imposed or remains outstanding.' The umpire will hail or signal to identify each such boat.
- (c) A black flag with one long sound means 'A boat is disqualified.' The umpire will hail or signal to identify the boat disqualified.

Q3.2 (a) A boat penalised under instruction Q3.1(b) shall take a One-turn Penalty.

- (b) A boat disqualified under instruction Q3.1(c) shall promptly leave the course area.

Q4 PENALTIES AND PROTESTS INITIATED BY AN UMPIRE; ROUNDING OR PASSING MARKS

Q4.1 When a boat

- (a) breaks rule 31 and does not take a penalty,
- (b) breaks rule 42,
- (c) gains an advantage despite taking a penalty,
- (d) deliberately breaks a rule,
- (e) commits a breach of sportsmanship, or



- (f) fails to comply with instruction Q3.2 or to take a penalty when required to do so by an umpire

An umpire may penalise her without a protest by another boat. The umpire may impose one or more penalties to be taken under rule 44, each signalled by displaying a red flag and hailing the boat, or disqualify her under instruction Q3.1(c), or report the incident to the protest committee for further action. If a boat is penalised under instruction Q4.1(f) for not taking a penalty or taking a penalty incorrectly, the original penalty is cancelled.

- Q4.2** (a) A boat shall not round or pass a mark on the wrong side. If she does so, she may correct her error as provided in rule 28.1 only if she does so before she rounds or passes the next mark or finishes.
- (b) When a boat breaks instruction Q4.2(a) and fails to correct her error before rounding or passing the next mark or finishing, an umpire may disqualify her under instruction Q3.1(c).

- Q4.3** An umpire who decides, based on his own observation or a report received from any source, that a boat may have broken a rule, other than instruction Q3.2 or Q4.2(a) or a rule listed in instruction Q2.1, may inform the protest committee for its action under rule 60.3. However, he will not inform the protest committee of an alleged breach of rule 14 unless there is damage or injury.

Q5 PROTESTS; REQUEST FOR REDRESS OR REOPENING; APPEALS; OTHER PROCEEDINGS

- Q5.1** No proceedings of any kind may be taken in relation to any action or non-action by an umpire.
- Q5.2** A boat may not base an appeal on an alleged improper action, omission or decision of the umpires or the protest committee. In rule 66 the third sentence is changed to 'A party to the hearing may not ask for a reopening.'
- Q5.3** (a) Protests and requests for redress need not be in writing.
- (b) The protest committee may take evidence and conduct the hearing in any way it considers appropriate and may communicate its decision orally.
- (c) If the protest committee decides that a breach of a rule has had no effect on the outcome of the race, it may impose a penalty of points or fraction of points or make another arrangement it decides is equitable, which may be to impose no penalty.
- Q5.4** The race committee will not protest a boat, unless following a report under rule 43.1(c) or 78.3.
- Q5.5** The protest committee may protest a boat under rule 60.3. However, it will not protest a boat for breaking instruction Q3.2 or Q4.2(a), a rule listed in instruction Q2.1, or rule 14 unless there is damage or injury.

October 12, 2011